



## 2018 COMPETITION RULES Basically- 4 -Cylinder Division

### INTRODUCTION:

All parts with identification numbers removed or covered will be considered illegal. It is ultimately the obligation of each participant to insure that his or her conduct and equipment comply with all applicable Stockton 99 Speedway rules and regulations. No expressed or implied warranty of safety shall result from publications of or compliance with these rules. They are intended as a guide for the conduct of the sport and are in no way a guarantee against injury or death to participants, spectators or others.

SIMPLICITY IS THE KEY TO THIS CLASS, IF IT DID NOT COME ON YOUR VEHICLE, IT CANNOT BE ADDED, UNLESS OTHERWISE DEFINED.

### COMPETING VEHICLES:

1. Open to all pre 1996 American or foreign manufactured 3-cylinder or 4-cylinder; steel bodied cars or compact trucks with a stock 105" maximum wheelbase.
2. Front or rear wheel drive.
3. No jeeps, convertibles, vans or station wagons.
4. Wheelbase must match year, make & model of car used.
5. A tolerance of plus (+) or minus (-) 1 inch will be allowed.
6. No four wheel drive vehicles.
7. No "dedicated" sports cars. No "special edition" cars. No V-Tec or G.S.R. cars.
8. Volkswagen "bugs" allowed, 1600 cc maximum engine size.
9. Maximum displacement for all American and Foreign vehicles is 2.5 liters.
10. Every driver is required to carry a manual for their vehicle, year, make, and model at all times.

### ROLL CAGE: (see illustration last page)

1. 6 point roll cages designed for the safety of the driver in case of a rollover or side impact.
2. Round steel tubing 1 1/2" by 0.095" minimum shall be used for the roll cage (no galvanized or black pipe).

3. Roll cage must be plated top and bottom with four 3/8 grade 8 bolts.
4. The driver's head must have 2" clearance from the bottom of the halo.
5. Main rear roll bar with two (2) cross braces. One (1) low and one (1) at shoulder height of seat.
6. Two (2) door bars with two (2) uprights on driver side. Minimum 1/8" steel plate on drivers door bars. The same will be required for the passenger's side if there is a rider in the vehicle.
7. Two (2) rear down bars. Can have cross bar connecting rear down bars.
8. Two (2) forward down bars.
9. One (1) dash cross bar connecting front down bars, either above or below the steering column.
10. Cars running with passengers must have same cage as driver side requirement.

#### CHASSIS/SUSPENSION:

1. All chassis to remain stock for the make, model and year of vehicle.
2. Steering must be stock and OEM locations.
3. No bump stops are allowed.
4. Front strut tower stiffener allowed.
5. Spring rubbers are allowed.
6. No more than +/- 1" of camber from top of wheel to the bottom of wheel. (to be teched pre-grid)
7. Sway bars must be stock and in stock location, end links must be stock but can be adjusted.
8. Minimum ride height 6" measured from front frame rail behind front tire.
9. Spring and sleeve adjusters allowed. NO more than \$60.
10. Bassett wheels or equivalent with 4" backspace are allowed.
11. NO fully adjustable shocks like function forums or Blox, etc. allowed.
12. Ride height is 5 inches.

#### BODIES:

1. Remove all glass from doors. Cover any holes that are in the firewall. Weld all doors shut or bolted plates. Remove all other glass and outside chrome trim including door handles, turn lights, tail lights, etc.
2. Stock windshield, Lexan, or safety screen only. Two metal straps minimum 1/8" thick by 1" wide shall secure windshield mounted in such a manner inside as to prevent entry of a tire into driver's compartment.
3. Firewall and interior floor pan must be stock and in original locations, and will remain up to
4. One side mirror of any kind is mandatory (Maximum of 2 mirrors will be allowed).
5. Bumper covers required.
6. Spoilers are allowed with a maximum 6" height.
7. Bumpers may be "scratch built" or reinforced. Must be chained front and rear with a minimum." chain.

#### TIRES AND RIMS:

1. All competing cars will have stock sized rims for the make, model and year of vehicle. Maximum 7" wide only if your vehicle came equipped from the manufacture with a 7" wheel. 15x7, 14x7 allowed.
2. OEM size steel replacement wheels are allowed.
4. No DOT racing tires allowed.
5. No street slick tires are allowed.
6. Maximum size 205 with a minimum 50 series or Falken Azenis 205/50/15 tires
7. No less than a 200 tread wear rating

#### WEIGHT:

8. Car Weights: 1750 single cam, 1900 dual cam

#### DRIVE TRAIN:

1. All transmissions must remain stock.
2. All transmissions must have working forward and reverse gear.
3. No hollow torque converter allowed.1

4. No direct locked up transmissions allowed.
5. Transmission cooler cannot be located in driver's compartment.
6. Standard transmissions shall have factory steel fly wheel and stock configuration clutch assembly.

**DRIVE SHAFT:**

1. The drive shaft must be stock and painted white.
2. Must have two safety hoops made of at least .” x 2” steel strap 6” from front and rear of u-joints.

**REAR ENDS:**

1. Rear end may not be modified in any way and must remain stock in all aspects.
2. No floating rear ends permitted.
3. No quick change rear ends permitted.

**ENGINES:**

1. No turbos, super chargers or rotary engines.
2. Engine must remain stock in all aspects for year and make.
3. No modifications to engine or drive train components are allowed unless approved by Stockton 99 Officials.
4. Any single cam engine which came with factory VTEC is allowed if it was OEM.
5. No VTEC with dual cam engines
6. No more than 225 psi compression
7. Must have factory engine stamp
8. Cold air intake must be under hood

**IGNITION:**

1. Factory production distributor shall be used.
2. No external ignition components allowed.

3. Chipped ECU allowed.

**BATTERY:**

1. Battery must be mounted behind the driver's seat.
2. No plastic battery boxes are allowed.
3. Only one automotive battery per car.
4. A master on/off switch must be located in driver cockpit and clearly labeled and within safe reach of officials.

**EXHAUST:**

1. Mufflers and exhaust must be used on all racecars that enter the racing surface. Exhaust system must be mounted in such a way as to direct spent gasses away from cockpit of vehicle and away from areas of possible fuel spillage. Mufflers are required with an 85 or less D.B.A reading at 100 feet. Cars that do not meet the D.B.A reading will be sent home. The New Stockton 99 Speedway reserves the right to lower the decibel requirement at any time
2. Catalytic converters must be removed.
3. Exhaust pipe must be complete and free of leaks.
4. Must not use wire or plumber's tape to secure muffler.
5. Headers allowed, maximum \$200 nationally advertised price. (no ebay, etc.)

**AIR CLEANERS:**

1. Stock air cleaners, cold air intakes allowed in engine compartment only

**FUEL:**

1. Gasoline only, no additives allowed.
2. Racing gasoline permitted.
3. No Nitrous Oxide of any kind.

**SAFETY:**

1. Only Stockton 99 approved full face helmets will be allowed SA-2010, or better.
2. Helmets must be a minimum Snell foundation rated.

3. Driver fire suits are mandatory and must be kept clean and in good repair.
4. Long hair cannot be exposed (visible outside of helmet)
5. Racing gloves, shoes and neck braces are mandatory.
6. Nomex socks, HANS OR HUTCHENS are highly recommended.
7. A quick release 5 or 6 point safety belt and shoulder harness no less than 3" wide is mandatory as well as an anti-submarine (crotch) belt.
8. The belts must be attached to the frame or cage with ." grade eight bolts and a 1/8" (or larger) safety cable installed as a backup.
9. Belts will need to be in a three year window of date that it was manufactured.
10. The Officials will inspect seatbelts and you will not race if they are not fastened securely.
11. Racing seats are mandatory. Aluminum seats are required.
12. Seats must be mounted with no less than 4-3/8" grade 8 bolts.
13. A quick release metal coupling on steering wheel is mandatory if altered.
14. Radio communications are permitted.
15. Windows nets must be securely fastened and have a tight fit with the quick release facing the driver (no fine mesh window nets allowed).
16. All crew members and guests are required to have matching team shirts.
17. No shorts, capris, or open toe shoes allowed in the pit area.
18. Transponders must be mounted a minimum 10" behind the rear axle on the right side of your vehicle.
19. Net, seat & belts must be mounted to the cage.

#### FIRE EXTINGUISHER:

1. A minimum of a one pound fire extinguisher is required in all cars.
2. Fire extinguisher must be mounted securely and have a quick release latch within a drivers reach.

#### FUEL CELLS:

1. Fuel cell/boat tank must be covered, secured and located in trunk if not stock fuel cell.
2. The fuel cell must hold no more than 8 gallons.
3. Fuel line in cockpit area must be one of the following materials: Stainless steel braided racing hose, high flow aluminum fuel lines, or fiber braid reinforced synthetic rubber liner.
4. Fuel shut off valve mandatory within side of driver cockpit. Oberg valve is allowed.

#### IDENTIFICATION:

1. To ensure the proper scoring, contrasting block numbers with a minimum one and one quarter inch borders are required.
2. Numbers must be painted on both doors (minimum 16 in).and top (facing right side/ 24-in.) and must measure five inches wide. If letters are used, they must measure at least six inches high. If circles are used, they must measure a minimum of one and one quarter inches wide (circle thickness) and must circle completely around the number, not through it.
3. It is optional for cars to have a six inch high number on the left tail light area and right front headlight area.

#### GENERAL RULES:

1. Drivers are responsible for tire removal. Tires and/or fluids must be removed from the speedway by the competitors. Purse/Payout may be delayed until disposal issues are resolved.
2. Competitors will come to the scale/pre-grid area in order. Positions will be posted at the pit shack and it the sole responsibility of the driver and or driver's crew to know the proper order for pre-grid. If a competitor is not found to be in his/her correct order, that competitor can be sent to the back of the starting order at the discretion of the chief steward.
3. If a competitor has a mechanical failure and cannot comply with rule #2 of the General Rules section, competitor must notify the official at the pit shack immediately.
4. When entering tech lane, no lifting, no jacks, no adjusting allowed. Failure to do so could result in losing qualifying or starting position at the discretion of track officials.
5. Cars failing to meet height or weight requirements will be sent to the back of main event, heat races, and/or trophy dashes, all to the discretion of track officials.

#### POST RACE INSPECTION:

All post race inspection is at the discretion of the official(s) and may include impoundment of the car for further inspection at the discretion of the official(s). Refusal to leave the car in impoundment will result in a disqualification and forfeiture of all points, monetary awards, and trophies. Additionally, there will be no refunds for the evening.

#### RACE DAY PROTEST PROCEDURE:

Any car, or driver, may be protested by a competitor or competitors in your class on that evening's event. Protest must be specific in nature of part(s) to be checked. Protest shall accompany a written protest, \$500.00 cash only, and a 2018 Stockton 99 License. Fee may be higher subject to severity of issue. To be determined by the Chief Steward, at the sole discretion of the Chief Steward.

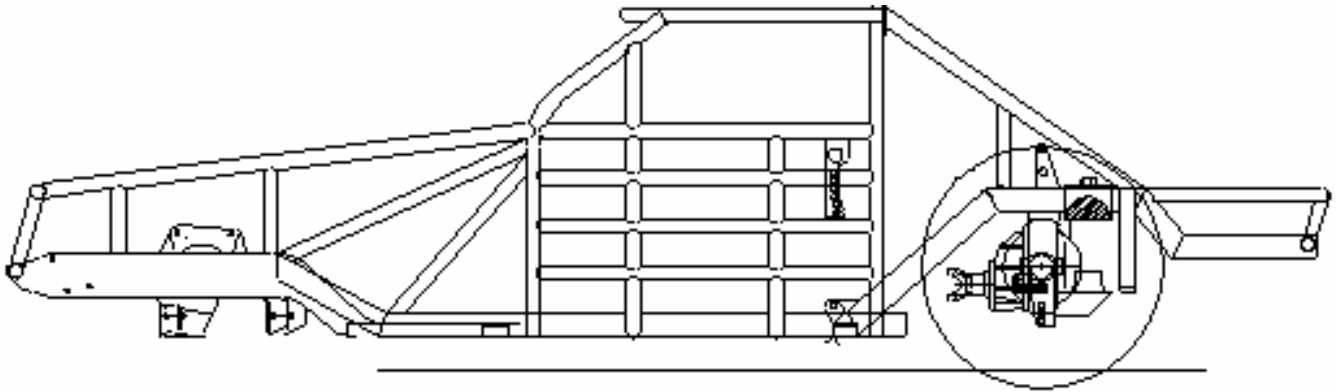
#### POST RACE PROTEST PROCEDURE:

Any car, or driver, may be protested by a majority of competitors in your class on that evening's event. Protest must be specific in nature of part(s) to be checked. Cost of protest will be related to the degree of the protest. Protest shall accompany a minimum dollar amount to be determined by the Chief Steward, at the sole discretion of the Chief Steward. Protest must be made in writing within 5 minutes of the checkered flag of the prospective division that the protest is a direct result of.

Track Officials interpretation shall supersede any and all other interpretations. When there is no specific rule to govern the occasion, the officials ruling shall be final. In order to assure fair competition, any official may require a competitor to change or modify equipment, or may require a competitor to compete in the next higher division. All equipment is subject to the approval of track officials. The rules as set forth on the following pages are intended to be as cost effective as possible. No equipment will be considered as having been approved by reason of having passed through inspection. Any equipment which does not conform to the specification or tolerances contained in The New Stockton 99 Speedway rulebook will not be eligible for approved during the 2018 season. All cars may be weight factored at anytime to equalize the competition.

Diagram:





The New Stockton 99 Speedway reserves the right to change these rules at anytime, without notice. These rules are subject to revision and/or amendment as needed in addition to the interpretation of officials.